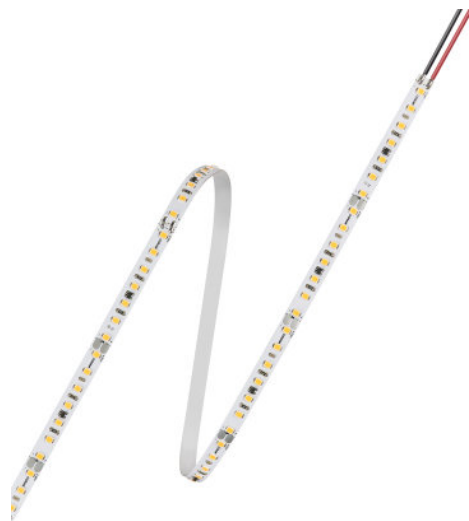


## VALUE Flex 2400S

LED modules for semi-professional applications



### Areas of application

- Hospitality
- Signage
- Architecture lighting
- Cove lighting
- General illumination
- Wall integration
- Display cabinet lighting

### Product benefits

- Energy saving low-power flexible LED strip
- Pre-wired LED strip, simple and quick plug-and-play installation
- Good light output due to homogeneous LED distance and high color consistency
- Easy mounting on many smooth surfaces thanks to self-adhesive tape at the back
- Easy installation with optional track system
- Easy to cut and reconnect to the reliable SLIMCONNECT system G2

### Product features

- Available with light color: Warm White, Cool White
- Luminous flux: up to 2400 lm/m
- High color consistency: 4 SDCM
- Self-cooling
- Beam angle per module: 120°
- Dimmable with suitable OPTOTRONIC control gears
- Type of protection: IP20



# Product family datasheet

## Technical data

### Electrical data

Product description	Nominal voltage	Rated wattage	Nominal wattage per meter	Reverse Voltage	Input voltage range
VF2400S -G3-827-03 <sup>1)</sup>	24.0 V	60.00 W	20.0 W	25 V	23...25 V
VF2400S -G3-830-03 <sup>1)</sup>	24.0 V	60.00 W	20.0 W	25 V	23...25 V
VF2400S -G3-840-03 <sup>1)</sup>	24.0 V	60.00 W	20.0 W	25 V	23...25 V
VF2400S -G3-865-03 <sup>1)</sup>	24.0 V	60.00 W	20.0 W	25 V	23...25 V

<sup>1)</sup> Modules perfectly matched to OSRAM OPTOTRONIC LED drivers (see relevant table)/For current photometric data and important safety, installation and application information, see [www.osram.com/led-systems/](http://www.osram.com/led-systems/)All the technical parameters apply to the entire module. In view of the complex manufacturing process for light emitting diodes, the typical values given above for the technical LED parameters are merely statistical values that do not necessarily correspond to the actual technical parameters of an individual product; individual products may vary from the typical values

### Photometrical data

Product description	Color temperature	Light color (designation)	Light color LED	Luminous flux per meter	Luminous flux	Luminous efficacy
VF2400S -G3-827-03 <sup>1)</sup>	2700 K	White	White	2100 lm	6300 lm	105 lm/W
VF2400S -G3-830-03 <sup>1)</sup>	3000 K	White	White	2200 lm	6600 lm	110 lm/W
VF2400S -G3-840-03 <sup>1)</sup>	4000 K	White	White	2400 lm	7200 lm	120 lm/W
VF2400S -G3-865-03 <sup>1)</sup>	6500 K	White	White	2400 lm	7200 lm	120 lm/W

Product description	Color rendering index Ra
VF2400S -G3-827-03 <sup>1)</sup>	>80
VF2400S -G3-830-03 <sup>1)</sup>	>80
VF2400S -G3-840-03 <sup>1)</sup>	>80
VF2400S -G3-865-03 <sup>1)</sup>	>80

<sup>1)</sup> Modules perfectly matched to OSRAM OPTOTRONIC LED drivers (see relevant table)/For current photometric data and important safety, installation and application information, see [www.osram.com/led-systems/](http://www.osram.com/led-systems/)All the technical parameters apply to the entire module. In view of the complex manufacturing process for light emitting diodes, the typical values given above for the technical LED parameters are merely statistical values that do not necessarily correspond to the actual technical parameters of an individual product; individual products may vary from the typical values

### Light technical data

Product description	Beam angle
VF2400S -G3-827-03 <sup>1)</sup>	120 °
VF2400S -G3-830-03 <sup>1)</sup>	120 °
VF2400S -G3-840-03 <sup>1)</sup>	120 °
VF2400S -G3-865-03 <sup>1)</sup>	120 °

<sup>1)</sup> Modules perfectly matched to OSRAM OPTOTRONIC LED drivers (see relevant table)/For current photometric data and important safety, installation and application information, see [www.osram.com/led-systems/](http://www.osram.com/led-systems/)All the technical parameters apply to the entire module. In view of the complex manufacturing process for light emitting diodes, the typical values given above

## Product family datasheet

for the technical LED parameters are merely statistical values that do not necessarily correspond to the actual technical parameters of an individual product; individual products may vary from the typical values

### LED module information

Product description	Number of LEDs per module	Number of LEDs per meter
VF2400S -G3-827-03 <sup>1)</sup>	350	116
VF2400S -G3-830-03 <sup>1)</sup>	350	116
VF2400S -G3-840-03 <sup>1)</sup>	350	116
VF2400S -G3-865-03 <sup>1)</sup>	350	116

<sup>1)</sup> Modules perfectly matched to OSRAM OPTOTRONIC LED drivers (see relevant table)/For current photometric data and important safety, installation and application information, see [www.osram.com/led-systems/](http://www.osram.com/led-systems/)All the technical parameters apply to the entire module. In view of the complex manufacturing process for light emitting diodes, the typical values given above for the technical LED parameters are merely statistical values that do not necessarily correspond to the actual technical parameters of an individual product; individual products may vary from the typical values

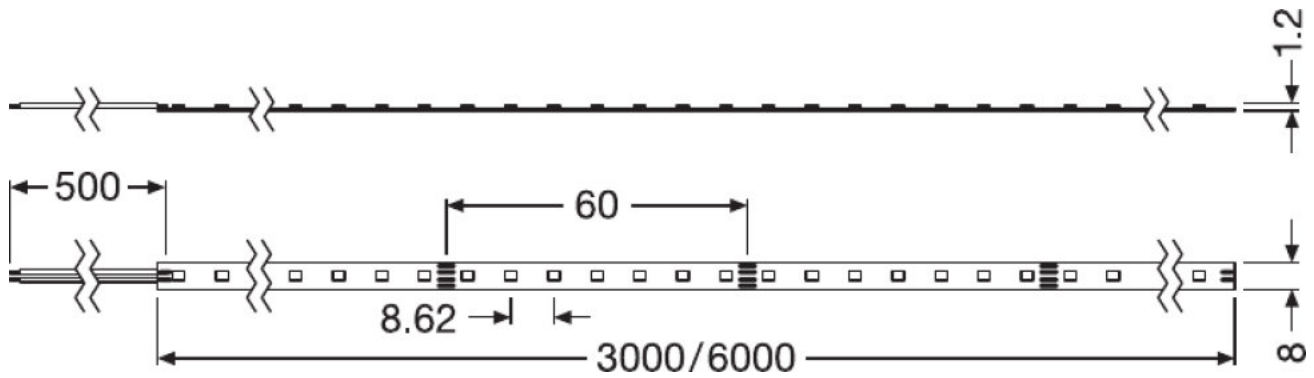
### Dimensions & weight

Product description	Length	Width	Height	Product weight
VF2400S -G3-827-03 <sup>1)</sup>	3000 mm	8.0 mm	1.5 mm	67.00 g
VF2400S -G3-830-03 <sup>1)</sup>	3000 mm	8.0 mm	1.5 mm	67.00 g
VF2400S -G3-840-03 <sup>1)</sup>	3000 mm	8.0 mm	1.5 mm	67.00 g
VF2400S -G3-865-03 <sup>1)</sup>	3000 mm	8.0 mm	1.5 mm	67.00 g

<sup>1)</sup> Modules perfectly matched to OSRAM OPTOTRONIC LED drivers (see relevant table)/For current photometric data and important safety, installation and application information, see [www.osram.com/led-systems/](http://www.osram.com/led-systems/)All the technical parameters apply to the entire module. In view of the complex manufacturing process for light emitting diodes, the typical values given above for the technical LED parameters are merely statistical values that do not necessarily correspond to the actual technical parameters of an individual product; individual products may vary from the typical values

# Product family datasheet

## Product line drawing



VF2400S -G3-827-03, VF2400S -G3-830-03, VF2400S -G3-840-03, VF2400S -G3-865-03

## Temperatures & operating conditions

Product description	Temperature range in operation
VF2400S -G3-827-03 <sup>1)</sup>	-10...70 °C
VF2400S -G3-830-03 <sup>1)</sup>	-10...70 °C
VF2400S -G3-840-03 <sup>1)</sup>	-10...70 °C
VF2400S -G3-865-03 <sup>1)</sup>	-10...70 °C

<sup>1)</sup> Modules perfectly matched to OSRAM OPTOTRONIC LED drivers (see relevant table)/For current photometric data and important safety, installation and application information, see [www.osram.com/led-systems](http://www.osram.com/led-systems)/All the technical parameters apply to the entire module. In view of the complex manufacturing process for light emitting diodes, the typical values given above for the technical LED parameters are merely statistical values that do not necessarily correspond to the actual technical parameters of an individual product; individual products may vary from the typical values

## Capabilities

Product description	Dimmable
VF2400S -G3-827-03 <sup>1)</sup>	Yes
VF2400S -G3-830-03 <sup>1)</sup>	Yes
VF2400S -G3-840-03 <sup>1)</sup>	Yes
VF2400S -G3-865-03 <sup>1)</sup>	Yes

<sup>1)</sup> Modules perfectly matched to OSRAM OPTOTRONIC LED drivers (see relevant table)/For current photometric data and important safety, installation and application information, see [www.osram.com/led-systems](http://www.osram.com/led-systems)/All the technical parameters apply to the entire module. In view of the complex manufacturing process for light emitting diodes, the typical values given above

## Product family datasheet

for the technical LED parameters are merely statistical values that do not necessarily correspond to the actual technical parameters of an individual product; individual products may vary from the typical values

### Certificates & standards

Product description	Energy efficiency class	Standards
VF2400S -G3-827-03 <sup>1)</sup>	A+ <sup>2)</sup>	Acc. to IEC 62471/Acc. to IEC 60598-1/Acc. to EN 60529/Acc. to EN 62031/Acc. to EN 55015/Acc. to EN 61547/CE
VF2400S -G3-830-03 <sup>1)</sup>	A+ <sup>2)</sup>	Acc. to IEC 62471/Acc. to IEC 60598-1/Acc. to EN 60529/Acc. to EN 62031/Acc. to EN 55015/Acc. to EN 61547/CE
VF2400S -G3-840-03 <sup>1)</sup>	A+ <sup>2)</sup>	Acc. to IEC 62471/Acc. to IEC 60598-1/Acc. to EN 60529/Acc. to EN 62031/Acc. to EN 55015/Acc. to EN 61547/CE
VF2400S -G3-865-03 <sup>1)</sup>	A+ <sup>2)</sup>	Acc. to IEC 62471/Acc. to IEC 60598-1/Acc. to EN 60529/Acc. to EN 62031/Acc. to EN 55015/Acc. to EN 61547/CE

<sup>1)</sup> Modules perfectly matched to OSRAM OPTOTRONIC LED drivers (see relevant table)/For current photometric data and important safety, installation and application information, see [www.osram.com/led-systems](http://www.osram.com/led-systems)/All the technical parameters apply to the entire module. In view of the complex manufacturing process for light emitting diodes, the typical values given above for the technical LED parameters are merely statistical values that do not necessarily correspond to the actual technical parameters of an individual product; individual products may vary from the typical values

<sup>2)</sup> Applicable on smallest operable unit

### Logistical data

Product description	Temperature range at storage
VF2400S -G3-827-03 <sup>1)</sup>	-30...85 °C
VF2400S -G3-830-03 <sup>1)</sup>	-30...85 °C
VF2400S -G3-840-03 <sup>1)</sup>	-30...85 °C
VF2400S -G3-865-03 <sup>1)</sup>	-30...85 °C

<sup>1)</sup> Modules perfectly matched to OSRAM OPTOTRONIC LED drivers (see relevant table)/For current photometric data and important safety, installation and application information, see [www.osram.com/led-systems](http://www.osram.com/led-systems)/All the technical parameters apply to the entire module. In view of the complex manufacturing process for light emitting diodes, the typical values given above for the technical LED parameters are merely statistical values that do not necessarily correspond to the actual technical parameters of an individual product; individual products may vary from the typical values

### Equipment / Accessories

- SLIMCONNECTsystem FLEX IP54 connector
- Optional Track system
- ELEMENT LED drivers
- OPTOTRONIC LED drivers

### Application advice



For more detailed application information and graphics please see product datasheet.

### Sales and Technical Support

## Product family datasheet

Sales and Technical Support [www.osram.com](http://www.osram.com)

### Download Data

File
 Certificates Manufacturers Declaration for Value Flex Family
 Declarations of conformity EU Declaration of Conformity VF and VFP

### Logistical Data

Product code	Product description	Packaging unit (Pieces/Unit)	Dimensions (length x width x height)	Volume	Gross weight
4052899528871	VF2400S -G3-827-03	Shipping carton box 10	250 mm x 235 mm x 293 mm	17.21 dm <sup>3</sup>	1987.00 g
4052899528895	VF2400S -G3-830-03	Shipping carton box 10	250 mm x 235 mm x 293 mm	17.21 dm <sup>3</sup>	1987.00 g
4052899528918	VF2400S -G3-840-03	Shipping carton box 10	250 mm x 235 mm x 293 mm	17.21 dm <sup>3</sup>	1987.00 g
4052899528932	VF2400S -G3-865-03	Shipping carton box 10	250 mm x 235 mm x 293 mm	17.21 dm <sup>3</sup>	1987.00 g

The mentioned product code describes the smallest quantity unit which can be ordered. One shipping unit can contain one or more single products. When placing an order, for the quantity please enter single or multiples of a shipping unit.

### Disclaimer

Subject to change without notice. Errors and omission excepted. Always make sure to use the most recent release.