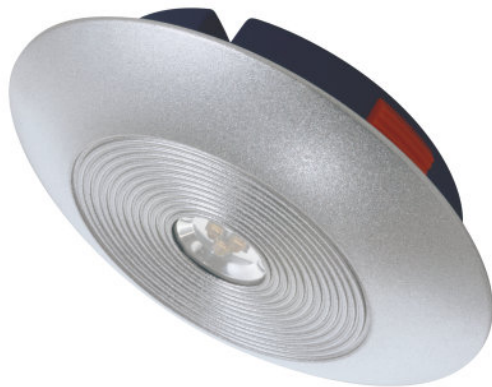

LEDVALUX DOWNLIGHT S

Recessed LED luminaires



Areas of application

- Energy-saving recessed furniture luminaire
- Can be used as replacement for 20 W low-voltage halogen applications
- Fits into 16 mm shelving and kitchen cupboards with standard 8 mm cable ducts
- Wide spectrum of applications

Product benefits

- Particularly small dimensions
- Shallow mounting depth
- Simple installation using the classic side holes in the shelves
- Variable installation possibilities
- Emits less heat than classic halogen luminaires

Product features

- Mounting diameter: 68 mm
- Ring colors in white matt or anodized aluminum
- Color temperature: 3,000 K (Warm White) or 4,000 K (Neutral White)
- Direct connection to a 220...240 V AC supply



Product family datasheet

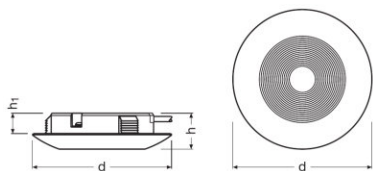
Technical data

Product description	Electrical data			Photometrical data				Light technical data		Dimensions & weight
	Nominal wattage	Nominal voltage	Mains frequency	Color temperature	Luminous flux	Light color (designation)	Color rendering index Ra	Beam angle	Light distribution	Length
LDVX COVELIGHT S AL 830	5.3 W	220...240 V	50...60 Hz	3000 K	330 lm	Warm white	>80	80 °	Rotational symmetric	88.0 mm
LDVX COVELIGHT S AL 840	5.3 W	220...240 V	50...60 Hz	4000 K	330 lm	Cool white	>80	80 °	Rotational symmetric	88.0 mm
LDVX COVELIGHT S WT 830	5.3 W	220...240 V	50...60 Hz	3000 K	330 lm	Warm white	>80	80 °	Rotational symmetric	88.0 mm
LDVX COVELIGHT S WT 840	5.3 W	220...240 V	50...60 Hz	4000 K	330 lm	Cool white	>80	80 °	Rotational symmetric	88.0 mm

Product description	Width	Diameter	Height	Colors & materials			Temperatures & operating conditions	Capabilities	
				Body material	Product color	Cover material	Ambient temperature range	Type of installation	Type of connection
LDVX COVELIGHT S AL 830	88.0 mm	88.0 mm	23.0 mm	Aluminum	Silver	Polymethyl methacrylate (PMMA)	≤ +25 °C	Recessed	Cable, 2 x 0.75 mm ²
LDVX COVELIGHT S AL 840	88.0 mm	88.0 mm	23.0 mm	Aluminum	Silver	Polymethyl methacrylate (PMMA)	≤ +25 °C	Recessed	Cable, 2 x 0.75 mm ²
LDVX COVELIGHT S WT 830	88.0 mm	88.0 mm	23.0 mm	Aluminum	White	Polymethyl methacrylate (PMMA)	≤ +25 °C	Recessed	Cable, 2 x 0.75 mm ²
LDVX COVELIGHT S WT 840	88.0 mm	88.0 mm	23.0 mm	Aluminum	White	Polymethyl methacrylate (PMMA)	≤ +25 °C	Recessed	Cable, 2 x 0.75 mm ²

Product family datasheet

Product description	Certificates & standards			Country specific categorizations
	Protection class	Type of protection	Protection against ignition and fire	Order reference
LDVX COVELIGHT S AL 830	II	IP20	F,MM	LDV DOWNLIGHT S
LDVX COVELIGHT S AL 840	II	IP20	F,MM	LDV DOWNLIGHT S
LDVX COVELIGHT S WT 830	II	IP20	F,MM	LDV DOWNLIGHT S
LDVX COVELIGHT S WT 840	II	IP20	F,MM	LDV DOWNLIGHT S



LDVX COVELIGHT S AL 830, LDVX
COVELIGHT S AL 840, LDVX
COVELIGHT S WT 830, LDVX
COVELIGHT S WT 840

Product family datasheet

Equipment / Accessories

– Equipped with OSOLON LED from OSRAM

Application advice

For more detailed application information and graphics please see product datasheet.

Logistical Data

Product code	Product description	Packaging unit (Pieces/Unit)	Dimensions (length x width x height)	Volume	Gross weight
4052899927339	LDVX COVELIGHT S AL 830	Shipping carton box 4	245 mm x 135 mm x 145 mm	4.80 dm ³	1168.00 g
4052899927353	LDVX COVELIGHT S AL 840	Shipping carton box 4	245 mm x 135 mm x 145 mm	4.80 dm ³	1162.00 g
4052899927346	LDVX COVELIGHT S WT 830	Shipping carton box 4	245 mm x 135 mm x 145 mm	4.80 dm ³	1304.00 g
4052899927360	LDVX COVELIGHT S WT 840	Shipping carton box 4	245 mm x 135 mm x 145 mm	4.80 dm ³	1162.00 g

The mentioned product code describes the smallest quantity unit which can be ordered. One shipping unit can contain one or more single products. When placing an order, for the quantity please enter single or multiples of a shipping unit.

Disclaimer

Subject to change without notice. Errors and omission excepted. Always make sure to use the most recent release.