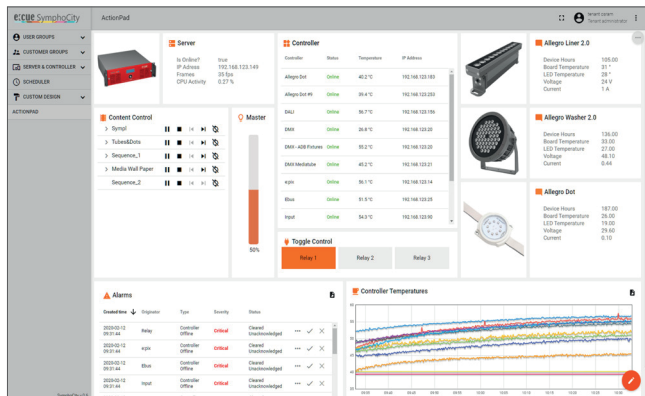


# SymphoCity



SymphoCity is e:cue's central platform to manage, configure and control multiple Sympholight installations- no matter whether it's a single building or an entire city!

It enables to easy manage and schedule content (scenes, videos, media, effects, light levels) from anywhere in the world and gives full access to all devices, servers all the way up to real-time status information's of fixtures or sensors in projects!

Receive automatic notifications in case of a device failure or a status change. Via the integrated user rights management, Superuser can specify who has access to sensitive information or can-do modifications. SymphoCity is a central management platform which connects your systems secured for the future, and furthermore allows the integration of third-party API such as Audio- Video Server, Projector control and many more fully scalable and customizable. Creates a single control frontend of the entire project including all AV and lighting products.

Schedule event-specific lighting scenes or content, and monitor the status of your assets or perform predictive maintenance routines.

## Some new features:

- Schedule content (videos, scenes, effects, light level, media)
- Content Management for video sequences (end-user level, upload or replace)
- The new integrated user rights management allows access from different parties with individual permissions to specific information's or the ability to make changes to the system