



## Cove Light AC DIM GII Wiring Box

The Cove Light AC Dim GII Wiring Box is used in conjunction with the Cove Light AC Dim GII Starter Cable (purchased separately) to provide an enclosed junction box to make the power and control connections at the beginning of a run. Connection from the starter cable to the first fixture in the run is made within the box.

**Compatible with all Cove Light AC Dim GII fixtures.**



### Accessories

Model No.	Description	Item Code
N/A	COVE LIGHT AC WIRING BOX	AM335500055

### Product Specifications

<b>Housing</b>	Powdercoated Aluminum 1/2" Conduit NPT fittings <sup>1</sup>
<b>Dimensions (L x W x H)</b>	193.3mm x 48.5mm x 35mm 7.6" x 1.9" x 1.4"
<b>Weight</b>	0.29kg / 0.64lbs
<b>Regulatory Listing &amp; Safety Approval</b>	cETLus
<b>Environment</b>	IP20, Suitable for Indoor Use Only

### Connector Specifications

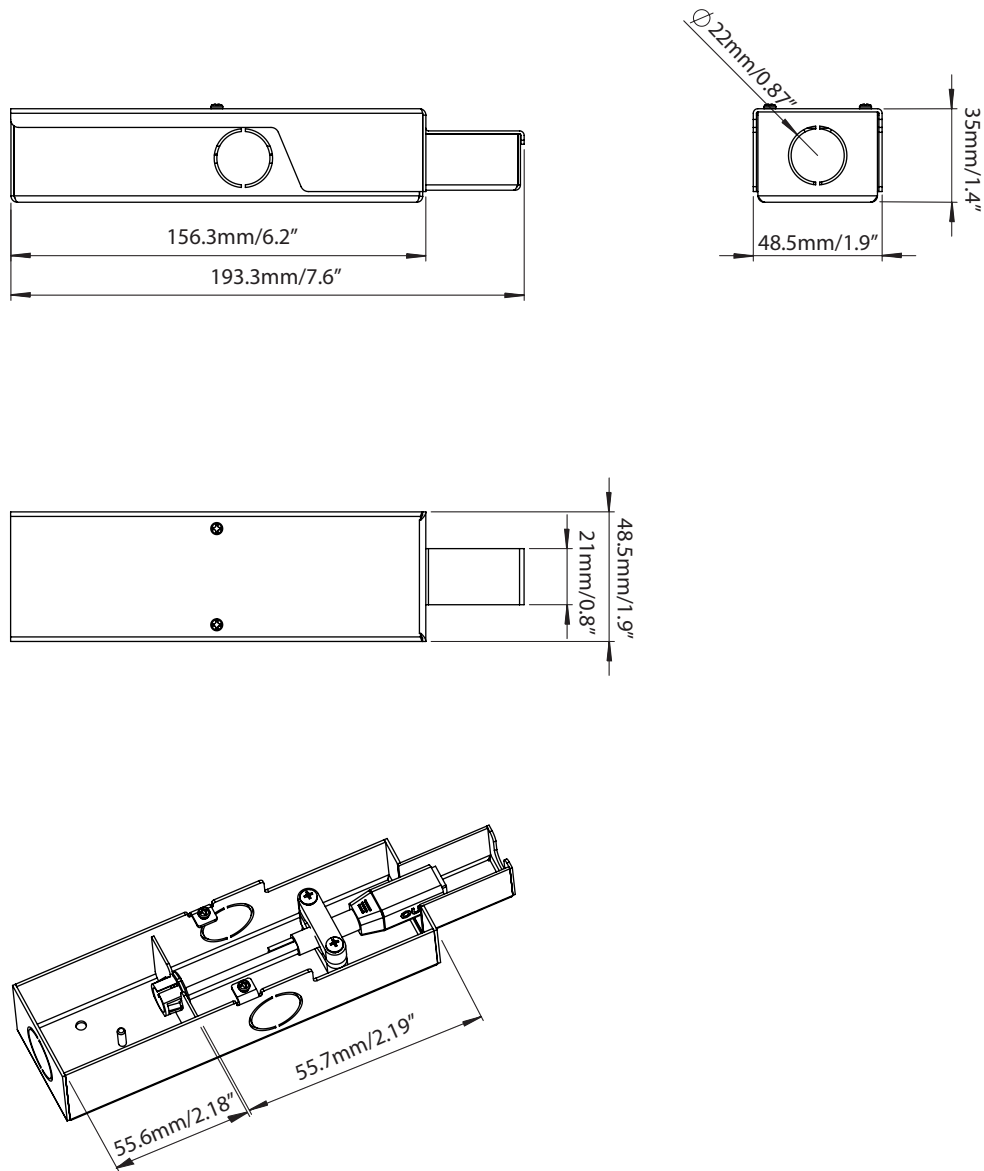
<b>Cable Type</b>	4 wire: Live, Neutral, 0-10V+, 0-10V- (Sold Separately) <sup>1</sup>
<b>Power In</b>	120-277V Live: Black Neutral: White
<b>Data In</b>	0-10V+: Violet 0-10V-: Grey
<b>Power / Data Out</b>	4 pin connector <sup>2</sup>

<sup>1</sup> Strain relief connectors and cables by others.

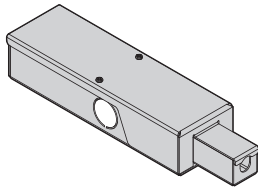
<sup>2</sup> Power/Data feed from Female connector Only.

## Cove Light AC DIM GII Wiring Box

## Dimensions

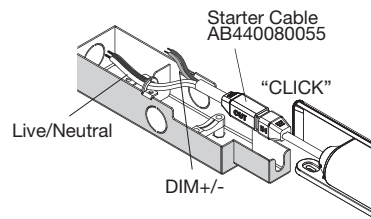


1

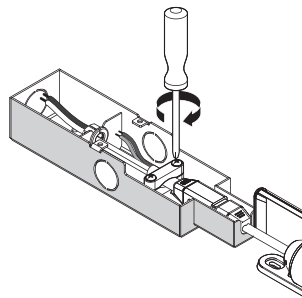


Cove Light AC Wiring Box  
AM335500055

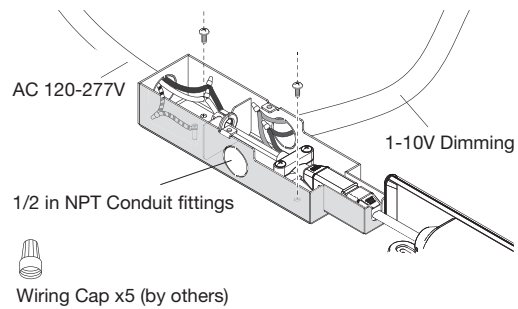
2



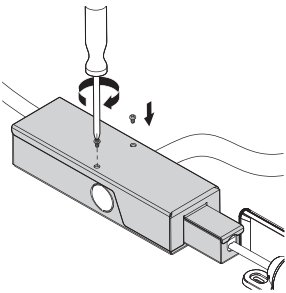
3



4



5



Cove Light AC DIM GII Wiring Box

System Diagram

